



District Loralai Profile



IMPLEMENTATION PARTNERS FOR BRDCEP GRANT COMPONENT



EU-TECHNICAL ASSISTANCE PARTNER



Written by

Asmat Kakar, Monitoring and Evaluation Officer, BRDCEP, RSPN

©2017 Rural Support Programmes Network (RSPN), Balochistan Rural Support Programme (BRSP), and National Rural Support Programme (NRSP). All rights Reserved.

www.rspn.org; www.brsp.org.pk; www.nrsp.org.pk



“This publication has been produced with the assistance of the European Union. The contents of this publication are the sole responsibility of Rural Support Programmes Network (RSPN), Balochistan Rural Support Programme (BRSP), and National Rural Support Programme (NRSP) and can in no way be taken to reflect the views of the European Union.”

More information about the European Union is available on:

Web: <http://eeas.europa.eu/delegations/pakistan/>

Facebook: [European-Union-in-Pakistan/269745043207452](https://www.facebook.com/European-Union-in-Pakistan/269745043207452)

CONTENTS

<i>Acronyms and Abbreviations</i>	1
<i>1. District Profile Brief</i>	2
<i>2. Demography and Population</i>	5
<i>3. District Administration</i>	6
<i>4. Agriculture and Horticulture</i>	9
<i>5. Gender and Women Empowerment</i>	10
<i>6. Health and WASH</i>	11
<i>7. Education</i>	13
<i>Bibliography</i>	17

List of Figures and Tables

Figure 1: District Map	Error! Bookmark not defined.
Figure 2: Local Government Administration Organogram (Administrative Setup)	7
Figure 3: Stage wise Enrolment 2016-17.....	10
Figure 4: Person Collecting Water in Loralai (%)	10
Figure 5: Rural Children Immunized aged 12-23 months (%)	11
Figure 6: Health Facilities 2014-15	12
Figure 7: Drinking Water Sources	13
Figure 8: Number of Schools 2016-17.....	14
Figure 9: Total School by Level 2016-17.....	14
Figure 10: Functional and Non Functional Schools 2016-17	14
Figure 11: Sanctioned and Appointed Staff in Schools 2016-17	14
Figure 12: Student Teacher Ratio 2016-17	14
Figure 13: Rural Gross Enrolment Ratio at Government Primary Schools (age 5-9)	14
Figure 14: Available Facilities in Schools 2016-17.....	15
Table 1: Demography and Population Pattern	5
Table 2: Poverty Status in Loralai.....	6
Table 3: Tehsils and Union Councils	7
Table 4: Federal and Provincial Government Departments in Loralai	8
Table 5: NGOs working in Loralai	8
Table 6: Land Utilization 2014-15 (area in hectares)	9
Table 7: Area Irrigated by different Sources of Irrigation 2014-15 (hectares)	9
Table 8: Member of Household Own Land in Rural Areas	9
Table 9: Number of Tube-wells 2014-15	9
Table 10: Number of Government & Private Tube-wells 2014-15	10
Table 11: Health Facilities 2014-15.....	11
Table 12: Number of Health Practitioners 2014-15	12
Table 13: Water and Sanitation Indicators (%)	12
Table 14: Distribution of Rural Household by Source of Drinking Water (%)	13
Table 15: Distribution of Rural Households by Type of Toilet (%).....	13
Table 16: Rural Education Indicators (%).....	15

ACRONYMS AND ABBREVIATIONS

AIDS	Acquired Immune Deficiency Syndrome
ANC	Antenatal Care
ARI	Acute Respiratory Infection
BHU	Basic Health Unit
BRDCEP	Balochistan Rural Development and Community Empowerment Programme
BRSP	Balochistan Rural Support Programme
DC	Deputy Commissioner
DEWS	Disease Early Warning System
DHIS	District Health Information Software
EPI	Expanded Programme on Immunization
EU	European Union
GoB	Government of Balochistan
HMIS	Health Management Information Systems
Km	Kilometre
LG	Local Government
LSO	Local Support Organisation
MICS	Multiple Indicators Cluster Survey
MNCH	Maternal, new-born and Child Health
NADRA	National Database and Registration Authority
NGO	Non-Governmental Organisation
PBS	Pakistan Bureau of Statistics
PDMA	Provincial Disaster Management Authority
P&D	Planning and Development
PSDP	Public Sector Development Programme
PSLM	Pakistan Social and Living Standards Measurement
RHC	Rural Health Clinics
RMC	Regional Metrological Centre
RSP	Rural Support Programme
RSPN	Rural Support Programmes Network
SBA	Skilled Birth Attendant
TB	Tuberculosis
TBA	Traditional Birth Attendance
LHV	Lady Health Visitor
LHW	Lady Health Worker
LHW-MIS	Lady Health Worker - Management Information Systems

1. DISTRICT PROFILE BRIEF

Major Factors

District Status:	October, 1903
Geographical Area:	8,155 Square km
Administrative Units:	2 Tehsils and 36 Union Councils (LG Balochistan)
Major Ethnic Groups:	Pashto
Languages:	Pashto
Climate:	Dry and cold winter, Mild-summer

Demography

District Population:	397,400 (2017)
Rural Population:	332,462 (84%)
Population Growth Rate:	2.46 (average annual 1998-2017)
Household Size:	7.11 persons

Law & Order

3 Police Stations, 9 Levies Thanas (GoB, 2014-15)

Productive Sector

Agriculture Ecological Zone: Temperate

Agriculture Land Area (hectares): Cultivated area Net sown: 30,095
Area not available for cultivation: 68,073
Cultivable waste: 62,891 (GoB, 2014-15)

Major Crops: *Rabi* Crops: Wheat, Cumin, Barley, Chickpea, Peas, Lentil, Vegetables

Kharif Crops: Sorghum, Millet, Maize, Beans (mung, mash), Onion, Potato, Melons, Chilies, Fodder, Coriander, Garlic, Cotton

Major Fruits: Almond, Apricot, Grapes, Apple, Peach, Cherry, Pomegranate, Pistachio

Livestock Population:

Livestock 1601,918

Domestic poultry 317,912
(GoB, 2014-15)

Veterinary Institutions: 5 Veterinary Hospitals, 120 Veterinary Dispensaries

Telecommunications: 4 Telephone exchanges, 1,942 Landlines

Post offices: 7 Post Offices (GoB, 2014-15)

Social Sector

Drinking Water Sources: 37% Un-improved, 63% Improved (MICS, 2010)

Sanitation Facilities: 42% Un-improved, 58% Improved (MICS, 2010)

Health Facilities: 2 Hospital (Public Sector)

3 Rural Health Centres RHC

46 Dispensaries (GoB, 2014-15)

Pre-Natal consultation: 31% (% of cases) (PSLM, 2014-15)

Major Diseases: ARI, Diarrhea, Malaria

Special Health Programmes: TB and Malaria Control Programme, National Programme for Family Planning & Primary Health Care, Hepatitis Prevention and Control Programme, AIDS control programme, MNCH Programme

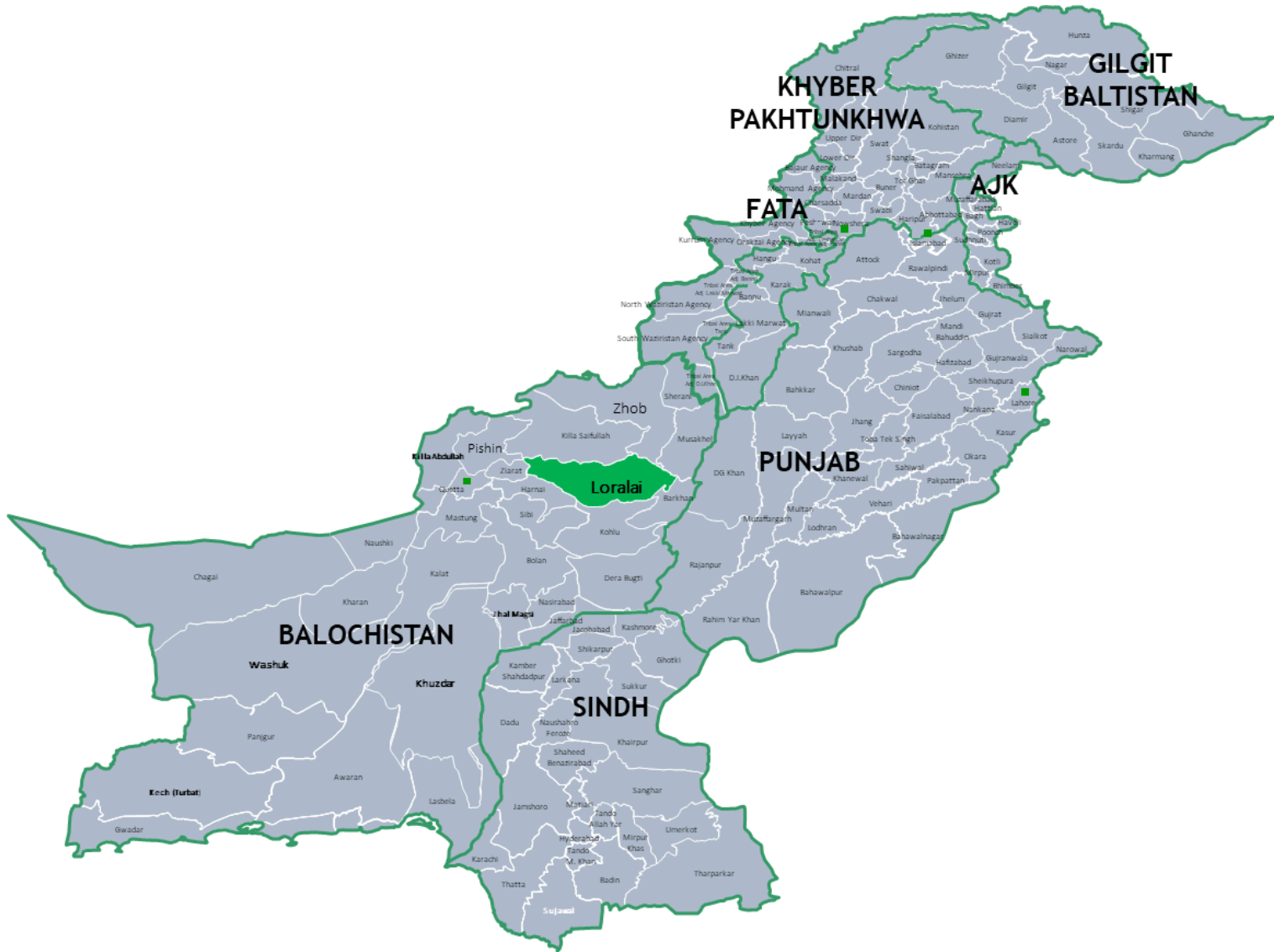
Reporting & Surveillance Systems: Disease Early Warning System, Lady Health Worker, Health Management Information System, District Health Information Software

Number of Schools: Girls 28%, Boys 72%

Primary level Rural Gross Enrolment Ratio (age 5-9): Female 42, Male 122

GEOGRAPHIC MAPS

Loralai district is located, 908-3,136 meter above sea level, in the northeast of Balochistan province. It is bordered with Killa Saifullah and Zhob to the north, Ziarat to the west, Musa Khail to the east, Harnai and Kohlu districts to the south.



HISTORY, TRIBES AND LANGUAGES

Loralai is a historical town located in northeast Balochistan. Formerly, it was called Bori. It was given district status in 1903. Kakar, Luni, Tareen and Nasar are the main tribes living in the district. Mostly inhabitants speak Pashto

2. DEMOGRAPHY AND POPULATION

According to 2017 census, total population of district Loralai is 397,400 with 53.46% male and 46.53% female as compared to 250,147 in 1998. Male-female sex ratio is 114.87 and population growth rate is 2.46% per year. Urban population of the district is 64,938 (16.34%) and rural population is 332,462 (83.66%). District household size is 7.11, urban household size is 7.44 and rural household size is 7.05.

Table 1: Demography and Population Pattern

INDICATOR	NUMBER
Total Population	397,400
-Male	212,451 (53.46%)
-Female	184,948 (46.53%)
-Urban	64,938 (16.34%)
-Rural	332,462 (83.66%)
Transgender	1
-Urban	0
-Rural	1
Sex Ratio	114.87
-Urban	126.74
-Rural	112.70
Households	55,876
-Urban	8,733
-Rural	47,143
Household size	7.11
-Urban	7.44
-Rural	7.05

Source: Census PBS, 2017

District Loralai's Poverty Status

Loralai is seventh poorest district among eight BRDCE programme districts in multidimensional poverty (MP) index ranking (21st in Balochistan province), MPI is based on 15 indicators of PSLM survey on education, health and standard of living (Planning Commission, UNDP and OPHI, 2016). According to PPAF and SDPI (2016) Loralai is ranked sixth poorest district in BRDCEP area, based on 27 indicators of PSLM survey pertaining to education, health, living conditions, and assets ownership.

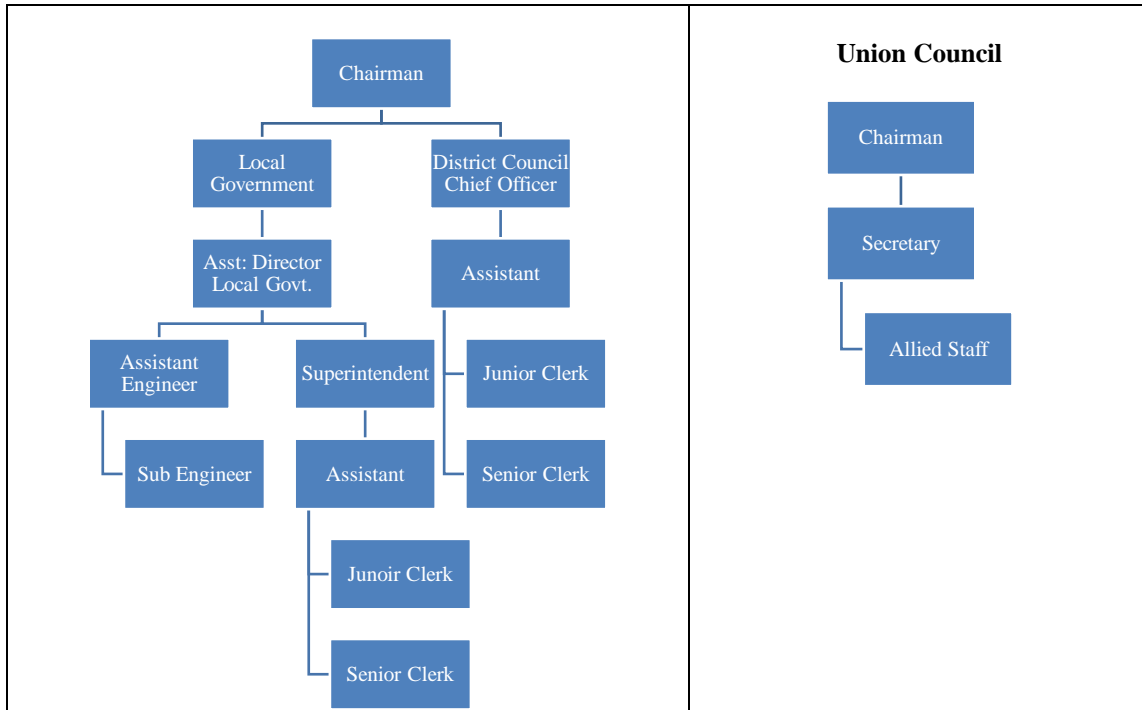
Table 2: Poverty Status in Loralai

Planning Commission, UNDP, OPHI, 2016	Multidimensional Poverty (MP) Index	Incidence of Poverty (%)	Intensity of Poverty (%)	Category of Incidence of Poverty
2014-15	0.320	68.5	46.7	60% to 69%
PPAF & SDPI, 2016	MP Population Share		MP Headcount Ratio	
2012-2013	0.14		67.3	

3. DISTRICT ADMINISTRATION

Balochistan Local Government Ordinance (BLGO, 1980) was replaced by BLGO, 2001 with a concept of district's Government. The district Loralai was administrated by the single line of administration covering rural and urban parts. The earlier system worked for two tenures, hence changed into BLGA 2010. Current Local Government Act 2010 is similar to BLGO (1980) and works in rural urban settings separately. Local Government Institutions of the district include Municipal Committees which is headed by the Chairman and relevant ward members, this depends on the number of population living in the area. District Council Chief Officer assists Chairman and members in Government set up; in the district Government, women, workers, and minorities are represented. Administrative set up of Local Government Administration is further explained in organogram given below:

Figure 1: Local Government Administration Organogram (Administrative Setup)



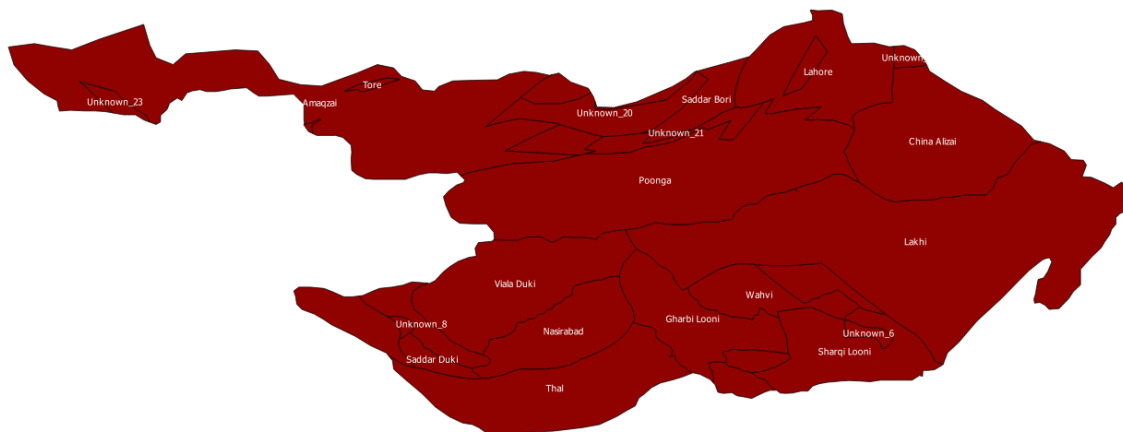
Source: P&D, GoB, 2011

TEHSILS AND UNION COUNCILS

There are two Tehsils and 36 Union Councils (UCs) in Loralai district. Below given table and map show tehsil wise listing and geographical location of UCs.

Table 3: Tehsils and Union Councils

TEHSIL	UNION COUNCIL
Bori	Kach Amaqzai, China Alizai, Shah Karez, Toor Thana, Bawar, Zara, Pathan Kot, Aghbarg, Poonga, Makhter-I, Makhter-II, Asghar Loon, Oryagai Nasran-I, Oryagai Nasran-II, Khan Gul Zara Nali, Sharqi Thal, Gharbi Thal, Oryagai Kakaran, Zangiwali, Wahvi-I, Lahore, Wahvi-II, Shabozai, Sharqi Luni
Duki	Lakhi-I, Lakhi-II, Thal Chutali, Sadar Duk, Ghareeb Abad, Viala Duk, Jungle, Nasar Abad-I, Nasar Abad-II, Gharbi Luni, Palos Kalan, M/C Laralai, M/C Duki



Source: UNOCHA, 2017

Table 4: Federal and Provincial Government Departments in Loralai

Education Department	Irrigation Department
Health Department	Population Welfare Department
Public Health Engineering Department	Local Government and Rural Development Department
Social Welfare Department	Labour and Manpower Department
Livestock Department	National Database Registration Authority
Agriculture Department	

Table 5: NGOs working in Loralai

Balochistan Rural Support Programme
National Commission on Human Development
Waselai Taleem
Helping Hands
Taraqee Foundation
PPHI
Mercy Corp
WESS
GPE

World Health Organisation
UNICEF
Homenet Pakistan
Pakistan Reading Project
DANESH

4. AGRICULTURE AND HORTICULTURE

The district falls in temperate zone, with total cultivated area is 129,168 hectares, the potential major crops are wheat, cumin, barley, fodder, sorghum, mung and mash bean, onion, vegetables, melons, coriander, and cotton. The potential fruits in the districts are almond, apricot, grapes, apple, peach, cherry, pomegranate, and pistachio.

Tube wells and karezes (springs) are commonly used main sources of irrigation for agriculture and others. Privately owned tube wells are maintained by respective owners. Details of agriculture land, land ownership, and irrigation given in tables below:

Table-6 shows land utilization statistics. Table-7 shows area irrigated by different sources of irrigation. Table-8 shows number of household own land in rural areas. Table-9 shows number of government & private tube-wells in the district.

Table 8: Land Utilization 2014-15 (area in hectares)

Geographical area	Reported area	Cultivated area			Cropped area		Un-cultivated area			
		Total	Current fallow	Net sown	Total	Area sown more than once	Total	Culturable waste	Forest area	Area not available for cultivation
801,800	318,523	129,168	98,217	30,951	31,137	186	189,355	62,891	58,391	68,073

Source: GoB, 2014-15

Table 9: Area Irrigated by different Sources of Irrigation 2014-15 (hectares)

Irrigated area	Canal		Tube-well	Well	Karezes, springs & others
	Govt.	Private			
28528	0	0	27468	0	1060

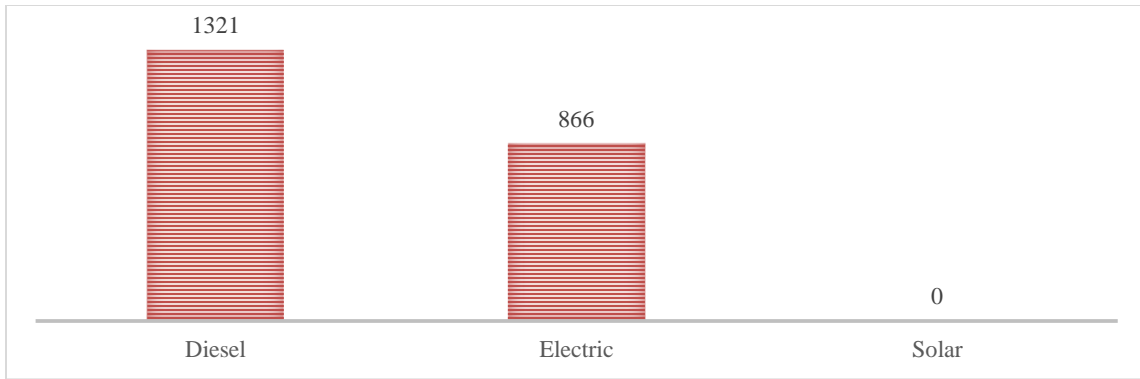
Source: GoB, 2014-15

Table 10: Member of Household Own Land in Rural Areas

Ownership	Percentage
Owner	47
Landless	53
Total	100

Source: MICS, 2010

Table 11: Number of Tube-wells 2014-15



Source: GoB, 2014-15

Table 12: Number of Government & Private Tube-wells 2014-15

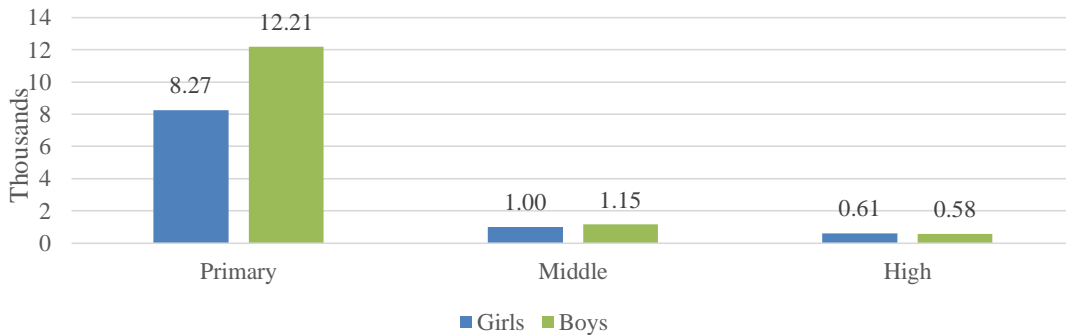
Government				Private				Total			
Electric	Diesel	Solar	Total	Electric	Diesel	Solar	Total	Electric	Diesel	Solar	Total
0	0	0	0	866	1321	0	2187	866	1321	0	2187

Source: GoB, 2014-15

5. GENDER AND WOMEN EMPOWERMENT

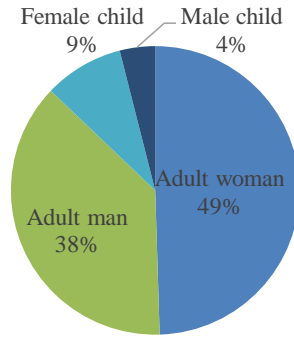
Figure-4 shows stage wise enrolment in district Loralai. Figure-5 shows gender wise persons collecting water

Figure 2: Stage wise Enrolment 2016-17



Source: EMIS, GoB, 2017

Figure 3: Person Collecting Water in Loralai (%)

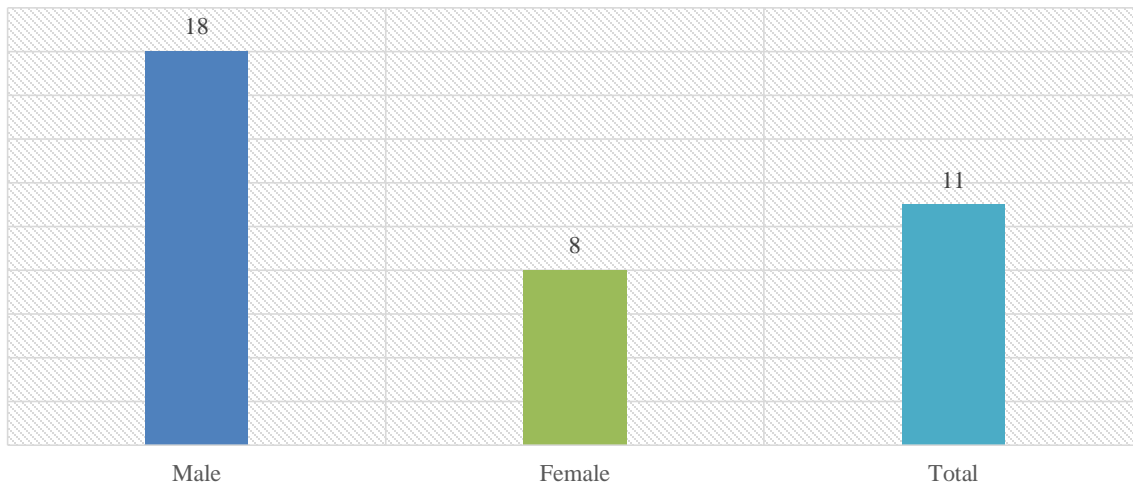


Source: MICS, 2010

6. HEALTH AND WASH

Figure-6 shows the percentage of children immunized aged 12-23 months in rural areas of Zhob district. Table-10 shows status of health facilities. Figure-7 shows the number of BHUs, MCHs and TB clinics. Table-11 shows the number of health practitioners. Table-12 shows water and sanitation indicators. Figure-8 shows drinking water sources. Table-13 shows distribution of rural household by source of drinking water. Table-14 shows distribution of rural households by type of toilet.

Figure 4: Rural Children Immunized aged 12-23 months (%)



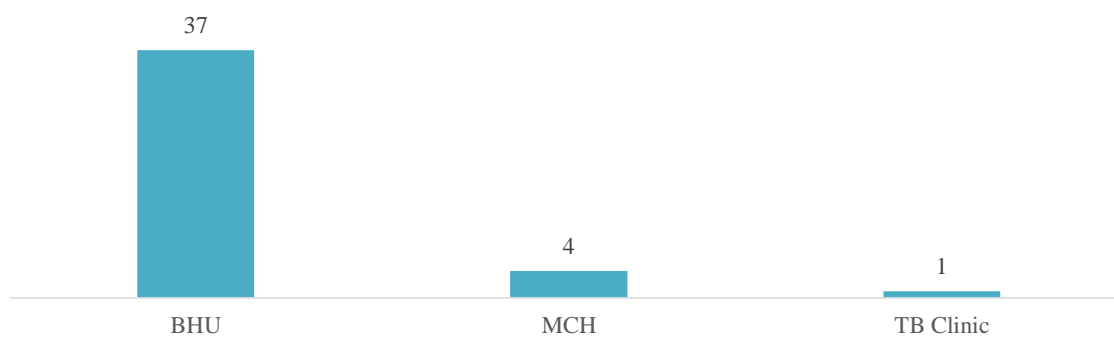
Source: PSLM, Pakistan Bureau of Statistics, 2014-15

Table 13: Health Facilities 2014-15

	PUBLIC	PRIVATE
Hospital	2	0
Dispensaries	46	1
RHC	3	0

Source: GoB, 2014-15

Figure 5: Health Facilities 2014-15



Source: GoB, 2014-15

Table 14: Number of Health Practitioners 2014-15

PRACTITIONERS	NUMBER
Doctors (total)	95
-Male	77
-Female	18
Nurses (total)	36
-Male	1
-Female	35
Pharmacist	12
Drug Inspector	3
Health Education Officer	1
LHV	40
Dias/Mid Wives	83
Malaria cases (2013-14)	2297

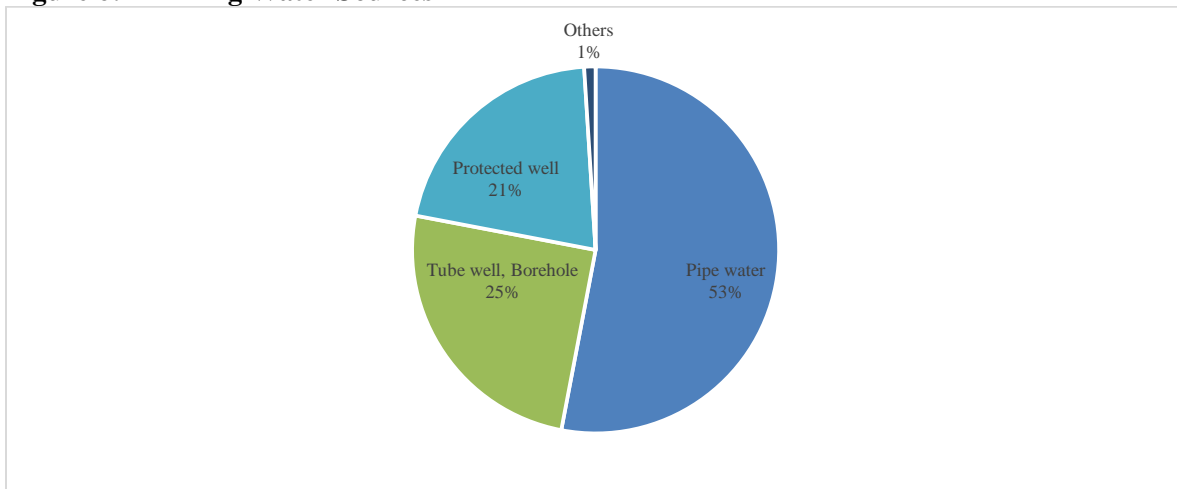
Source: GoB, 2014-15

Table 15: Water and Sanitation Indicators (%)

INDICATOR	2004	2010
Use of improved water sources	35	63
Access to safe means of excreta disposal	20	58

Source: MICS, 2004 & 2010

Figure 6: Drinking Water Sources



Source: MICS, 2010

Table 16: Distribution of Rural Household by Source of Drinking Water (%)

Tap Water	3
Hand Pump	15
Motor Pump	30
Dug Well	2
Others	50
Total	100

Source: PSLM, Pakistan Bureau of Statistics, 2014-15

Table 17: Distribution of Rural Households by Type of Toilet (%)

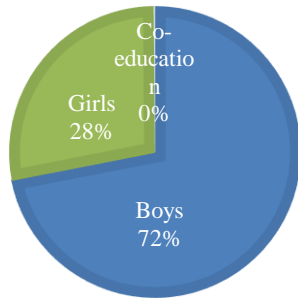
Flush	6
Non flush	70
No Toilet	24

Source: PSLM, Pakistan Bureau of Statistics, 2014-15

7. EDUCATION

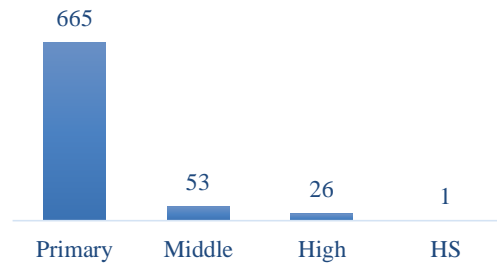
According to recent data from GoB and EMIS sources below given figure-9 shows gender wise number of schools in district Loralai. Figure-10 shows the total number of schools by level. Figure-11 shows the number of functional and nonfunctional schools. Figure-12 shows the number of sanctioned and appointed staff in Schools. Figure-13 shows student teacher ratio. Figure-14 shows available facilities in schools. Figure-15 shows rural gross enrolment ratio at primary level (age 5-9). Figure-16 shows rural education indicators.

Figure 7: Number of Schools 2016-17



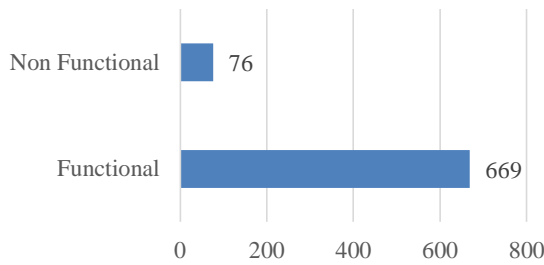
Source: EMIS, GoB, 2017

Figure 8: Total School by Level 2016-17



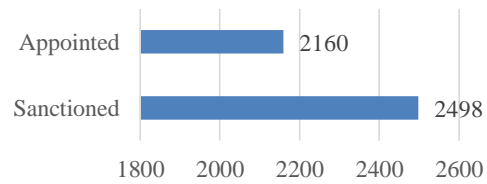
Source: EMIS, GoB, 2017

Figure 9: Functional and Non Functional Schools 2016-17



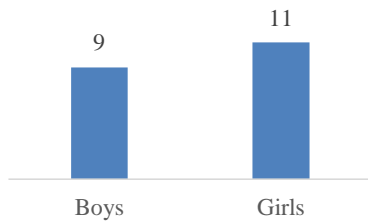
Source: EMIS, GoB, 2017

Figure 10: Sanctioned and Appointed Staff in Schools 2016-17



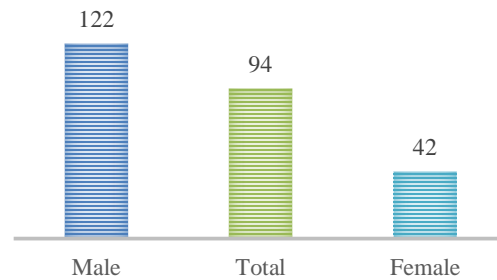
Source: EMIS, GoB, 2017

Figure 11: Student Teacher Ratio 2016-17



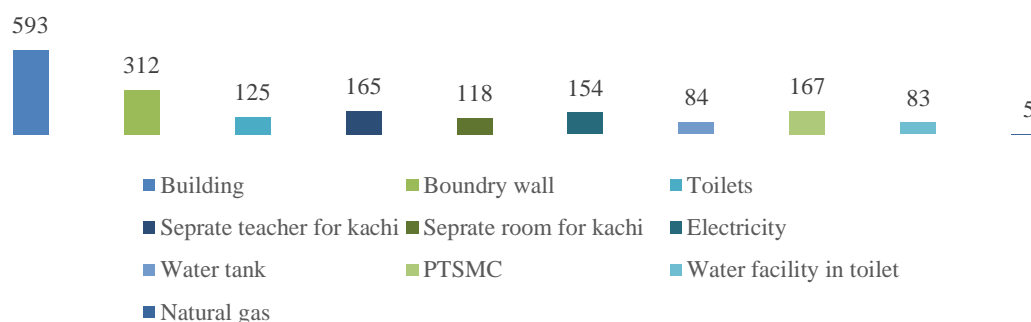
Source: EMIS, GoB, 2017

Figure 12: Rural Gross Enrolment Ratio at Government Primary Schools (age 5-9)



Source: PSLM, Pakistan Bureau of Statistics, 2014-15

Figure 13: Available Facilities in Schools 2016-17



Source: EMIS, GoB, 2017

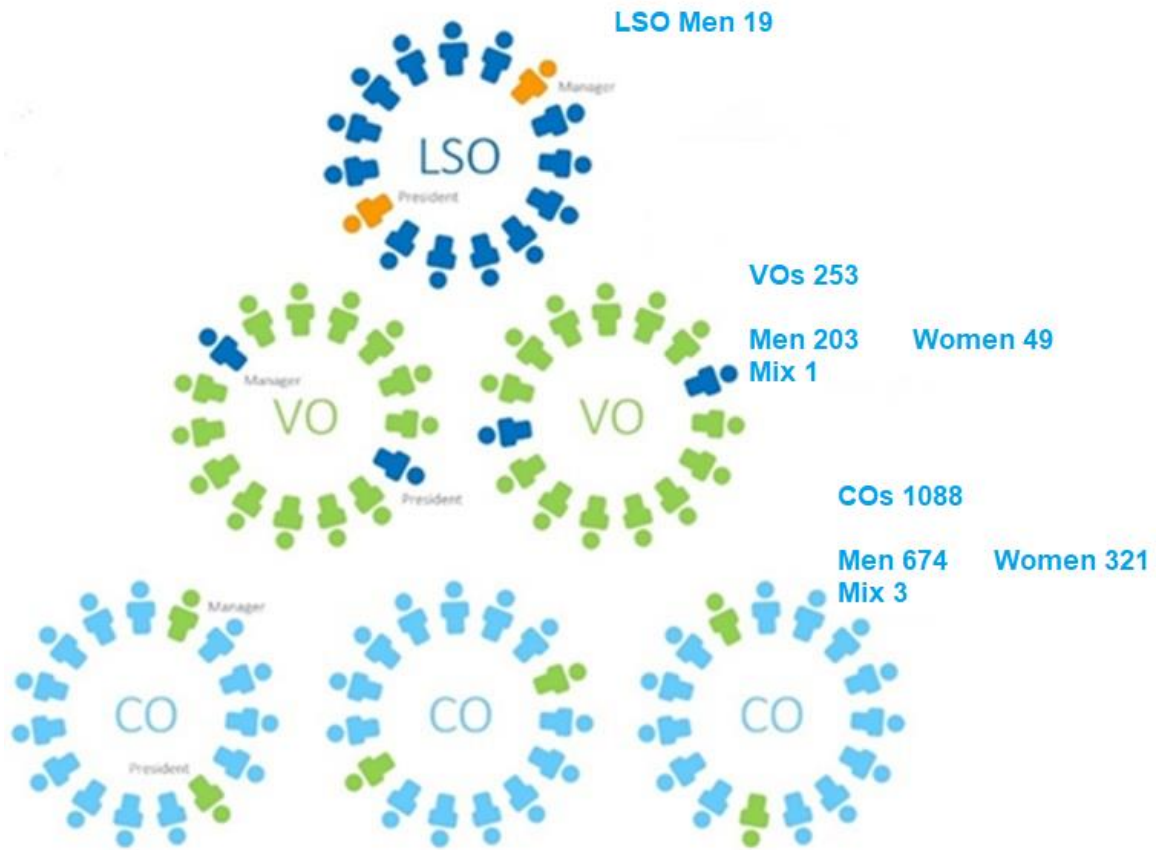
Table 18: Rural Education Indicators (%)

Indicators	Male	Female	Total
Gross Enrolment Ratio at Primary level (age 5-9)	144	42	94
Gross Enrolment Ratio at Primary level (age 4-9)	112	49	89
Net Enrolment Rate at Primary level (age 6-10)	88	31	70
Net Enrolment rate at Primary level (age 5-9)	81	26	62
Net Enrolment Rate at Primary level (age 4-9)	74	34	60
Primary level Enrolment in Government Schools a percentage of total Enrolment	100	100	100
Primary level Enrolment in Government Schools a percentage of total Primary Enrolment	100	100	100
Gross Enrolment Ratio at Middle level (age 11-13)	61	15	48
Gross Enrolment Ratio at Middle level (age 10-12)	43	10	34
Net Enrolment rate at Middle level (age 11-13)	35	9	28
Net Enrolment rate at Middle level (age 10-12)	14	6	12
Gross Enrolment Ratio at Matric level (age 14-15)	20	9	16
Gross Enrolment Ratio at Matric level (age 13-14)	20	11	17
Net Enrolment rate at Matric level (age 14-15)	12	7	10
Literacy-Population 10 years and older	58	15	40
Adult Literacy-population 15 years and older	51	9	32

Source: PSLM, Pakistan Bureau of Statistics, 2014-15

COMMUNITY INSTITUTIONS OF BRSP

Under BRDCEP, around 43,969 rural households in Loralai district will be mobilised and capacitated through three-tiered federated community organisations. Community members in the 36 rural union councils of the entire district Loralai, particularly women and marginalized, will be capacitated and assisted so that they can mobilise and form active operational and mature organisations, from COs to VOs, then LSOs and LSOs’ networks. Following given figure shows number of COs, VOs and LSOs formed in the district till Jun 2017.



BIBLIOGRAPHY

1. EMIS. (2017). *Education Management Information System*, Education Department, Government of Balochistan.
2. MICS. (2010). *Multiple Indicator Cluster Survey (MICS)*. Planning and Development Department, Government of Balochistan.
3. PBS. (2017). *Census - 2017*, Pakistan Bureau of Statistics, Government of Pakistan, Islamabad.
4. PSLM. (2014-15). *Pakistan Social and Living Standards Measurement Survey (PSLM) 2014-15*. Statistics Division, Government of Pakistan, Statistics Division, Pakistan Bureau of Statistics, Islamabad.
5. P&D. (2011). *District Development Profile*, Planning and Development Department (P&D), Government of Balochistan and United Nations Children's Fund (UNICEF).
6. P&D. (2014-15). *Development Statistics of Balochistan*, Bureau of Statistics, Planning and Development Department (P&D), Government of Balochistan, Quetta.
7. UNOCHA. (2017). *MapAction*, United Nations Office for the Coordination of Humanitarian Affairs (UNOCHA), MapAction Version 2, downloaded from QGIS.