



DISTRICT PROFILE KECH



IMPLEMENTATION PARTNERS FOR BRDCEP GRANT COMPONENT



EU-TECHNICAL ASSISTANCE PARTNER



Written by

Asmat Kakar, Monitoring and Evaluation Officer, BRDCEP, RSPN

©2017 Rural Support Programmes Network (RSPN), Balochistan Rural Support Programme (BRSP), and National Rural Support Programme (NRSP). All rights Reserved.

www.rspn.org; www.brsp.org.pk; www.nrsp.org.pk



“This publication has been produced with the assistance of the European Union. The contents of this publication are the sole responsibility of Rural Support Programmes Network (RSPN), Balochistan Rural Support Programme (BRSP), and National Rural Support Programme (NRSP) and can in no way be taken to reflect the views of the European Union.”

More information about the European Union is available on:

Web: <http://eeas.europa.eu/delegations/pakistan/>

Facebook: [European-Union-in-Pakistan/269745043207452](https://www.facebook.com/European-Union-in-Pakistan/269745043207452)

CONTENTS

<i>Acronyms and Abbreviations</i>	1
<i>1. District Profile Brief</i>	2
<i>2. Demography and Population</i>	4
<i>3. District Administration</i>	5
<i>4. Agriculture and Irrigation</i>	8
<i>5. Gender and Women Empowerment</i>	9
<i>6. Health and WASH</i>	10
<i>7. Education</i>	12
<i>Community Institutions of NRSP</i>	13
<i>Bibliography</i>	15

List of Figures and Tables

Figure 1: District Map	Error! Bookmark not defined.
Figure 2: Local Government Administration Organogram (Administrative Setup)	6
Figure 3: Number of Tube-wells 2013-14	9
Figure 4: Stage wise Enrolment 2015-16	10
Figure 5: Person Collecting Water in Kech (%).....	10
Figure 6: Health Facilities 2014-15.....	11
Figure 7: Drinking Water Sources	12
Figure 8: Number of Schools 2016-17	12
Figure 9: Total School by Level 2016-17	12
Figure 10: Functional and Non Functional Schools 2016-17	13
Figure 11: Sanctioned and Appointed Staff in Schools 2016-17	13
Figure 12: Student Teacher Ratio 2016-17	13
Figure 13: Available Facilities in Schools 2016-17	13
Table 1: Demography and Population Patterns	4
Table 2: Poverty Status in Kech	5
Table 3: Tehsils and Union Councils.....	6
Table 4: Federal and Provincial Government Departments in Kech	7
Table 5: NGOs working in Kech	8
Table 6: Land utilization 2014-15 (area in hectares).....	8
Table 7: Area Irrigated by different Sources of Irrigation 2014-15 (area in hectares)	9
Table 8: Member of Household Own Land in Rural Areas	9
Table 9: Number of Government & Private Tube-wells 2013-14.....	9
Table 10: Health Facilities 2014-15 (number)	10
Table 11: Number of Health Practitioners 2014-15	11
Table 12: Water and Sanitation Indicators (%)	11

ACRONYMS AND ABBREVIATIONS

AIDS	Acquired Immune Deficiency Syndrome
ANC	Antenatal Care
ARI	Acute Respiratory Infection
BHU	Basic Health Unit
BLGO	Balochistan Local Government Ordinance
BRDCEP	Balochistan Rural Development and Community Empowerment Programme
BRSP	Balochistan Rural Support Programme
DC	Deputy Commissioner
DEWS	Disease Early Warning System
DHIS	District Health Information Software
EPI	Expanded Programme on Immunization
EU	European Union
GoB	Government of Balochistan
HH	Household
HMIS	Health Management Information Systems
Km	Kilometre
LG	Local Government
LSO	Local Support Organisation
MICS	Multiple Indicators Cluster Survey
MNCH	Maternal, Newborn and Child Health
NADRA	National Database and Registration Authority
NGO	Non-Governmental Organisation
PBS	Pakistan Bureau of Statistics
PDMA	Provincial Disaster Management Authority
P&D	Planning and Development
PSDP	Public Sector Development Programme
PSLM	Pakistan Social and Living Standards Measurement
RHC	Rural Health Clinics
RMC	Regional Metrological Centre
RSP	Rural Support Programme
RSPN	Rural Support Programmes Network
SBA	Skilled Birth Attendant
TB	Tuberculosis
TBA	Traditional Birth Attendance
LHV	Lady Health Visitor
LHW	Lady Health Worker
LHW-MIS	Lady Health Worker - Management Information Systems

1. DISTRICT PROFILE BRIEF

Major Factors

District Status:	1 July 1977
Geographical Area:	22,540 Square km
Administrative Units:	4 Tehsils and 37 Union Councils (LG Balochistan)
Major Ethnic Groups:	Baloch
Languages:	Balochi, Urdu
Climate:	Hot summer, Mild cold winter

Demography

District Population:	909,116 (2017)
Rural Population:	606,980 (66.77%)
Population Growth Rate:	4.23 (average annual 1998-2017)
Household Size:	6.57 persons

Law & Order

4 Police Stations, 7 Levies Thanas (GoB, 2014-15)

Productive Sector

Agriculture Ecological Zone:	Sub-Tropical
Agriculture Land Area (hectares):	Not available
Major Crops:	<i>Rabi</i> Crops: Wheat, Barley, Vegetables <i>Kharif</i> Crops: Mung and Mash bean, Moth, Fruits, Vegetables, Onion, Chilies, Fodder, Cotton
Major Fruits:	Dates, Pomegranate, Grapes, Melons, Citrus, Guava, Mangoes, Banana, Papaya, Chickoo

Livestock Population:

	Livestock 750,052
	Domestic poultry 262,405 (GoB, 2014-15)
Veterinary Institutions:	Veterinary Hospitals 3, Veterinary Dispensaries 16
Telecommunications:	12 Telephone exchanges, 2,373 Landlines
Post offices:	10 Post Offices (GoB, 2014-15)

Social Sector

Drinking Water Sources:	89% Improved, 11% Un-improved (MICS, 2010)
Sanitation Facilities:	91% Improved, 9% Un-improved (MICS, 2010)
Health Facilities:	2 Hospital (Public Sector)

11 Rural Health Centres RHC
42 Dispensaries (GoB, 2014-15)

Pre-Natal consultation:

NA

Major Diseases:

Malaria, ARI, Diarrhea

Special Health Programmes: Expanded Program on Immunization, Malaria Control Program, TB Control Program, Hepatitis Prevention and Control Program, National Program for Family Planning & Primary Health Care, AIDS Control Program, MNCH Program, Global Fund against Tuberculosis & Malaria

Reporting and Surveillance Systems: HMIS and DHIS, Disease Early Warning System, LHW-MIS

Number of Schools:

Girls 39%, Boys 61%

GEOGRAPHIC MAP

Kech district is located, 100-1400 meter above sea level, in the south west of Balochistan province. It is bordered with district Panjgur to the north, district Awaran to the east and district Gwadar to the South.

The map below shows the exact boundaries with neighbouring districts



HISTORY, TRIBES AND LANGUAGES

District Kech is situated in the heart of historical Gedrosian region, Hellenized name of the modern days Makran region in Southern Balochistan. It was given district status in 1977. Gichki, Nausherwani and Hoth are the main tribes living in the district. 100% inhabitants speak Balochi.

2. DEMOGRAPHY AND POPULATION

Total population of district Kech is 909,116 (Census PBS, 2017) as compared to 413,204 in 1998; 54.39% is male population and 45.61% is female population in 2017. Male-female sex ratio is 119.24 and population growth rate is 4.23% per year. Urban population of the district is 302,136 (33.23%) and rural population is 606,980 (66.77%). District household size is 6.57, urban household size is 6.46 and rural household size is 6.62.

Table 1: Demography and Population Patterns

INDICATOR	NUMBER
Total Population	909,116
-Male	494,443 (54.39%)
-Female	414,663 (45.61%)
-Urban	302,136 (33.23%)
-Rural	606,980 (66.77%)
Transgender	10
-Urban	10
-Rural	0
Sex Ratio	119.24
-Urban	120.68
-Rural	118.53
Households	138,403
-Urban	46,745
-Rural	91,658
Household size	6.57
-Urban	6.46
-Rural	6.62

Source: Census PBS, 2017

DISTRICT KECH'S POVERTY STATUS

Kech is sixth poorest district among eight BRDCE programme districts in multidimensional poverty (MP) index ranking (21st in Balochistan province), MPI is based on 15 indicators of PSLM survey on education, health and standard of living (Planning Commission, UNDP and OPHI, 2016). According to PPAF and SDPI (2016) Kech is ranked eighth poorest district in BRDCEP area, based on 27 indicators of PSLM survey pertaining to education, health, living conditions, and assets ownership.

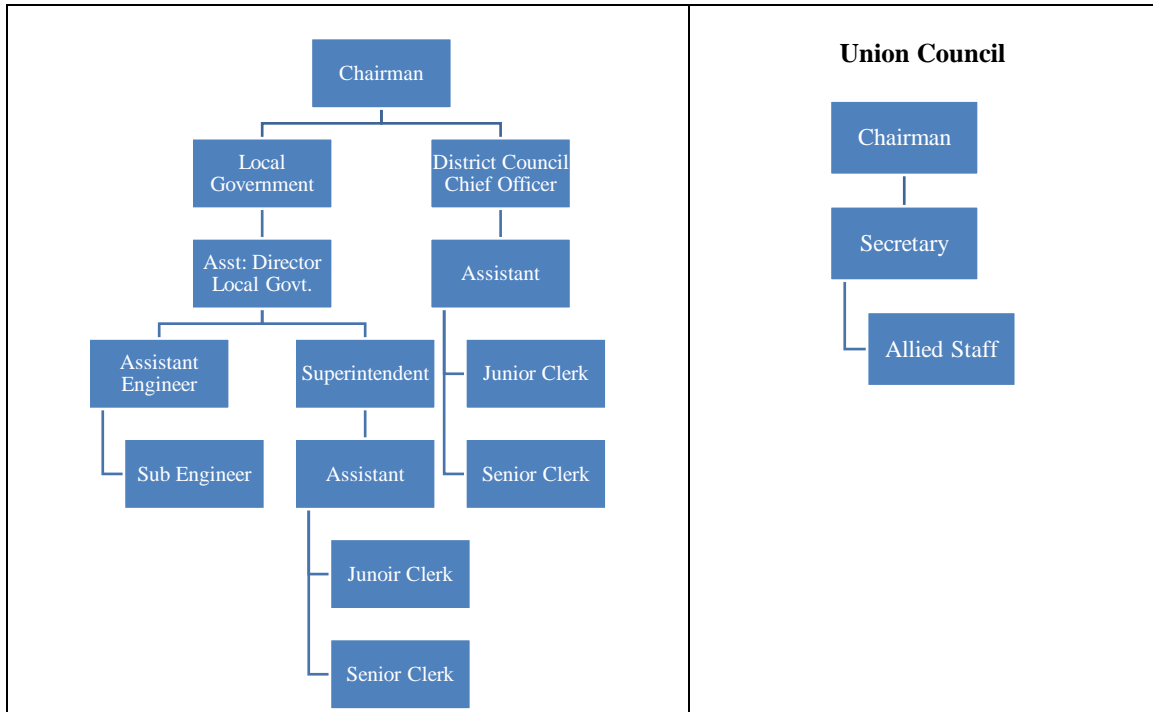
Table 2: Poverty Status in Kech

Planning Commission, UNDP, OPHI, 2016	Multidimensional Poverty (MP) Index	Incidence of Poverty (%)	Intensity of Poverty (%)	Category of Incidence of Poverty
2012-13	0.367	65.2	56.3	60% to 69%
PPAF & SDPI, 2016	MP Population Share		MP Headcount Ratio	
2012-2013	0.34		53.7	

3. DISTRICT ADMINISTRATION

Balochistan Local Government Ordinance (BLGO, 1980) was replaced by BLGO, 2001 with a concept of district's Government. The district Kech was administrated by the single line of administration covering rural and urban parts. The earlier system worked for two tenures, hence changed into BLGA 2010. Current Local Government Act 2010 is similar to BLGO (1980) and works in rural urban settings separately. Local Government Institutions of the district include Municipal Committees which is headed by the Chairman and relevant ward members, this depends on the number of population living in the area. District Council Chief Officer assists Chairman and members in Government set up; in the district Government, women, workers, and minorities are represented. Administrative set up of Local Government Administration is further explained in organogram given below:

Figure 1: Local Government Administration Organogram (Administrative Setup)



Source: P&D, GoB, 2011

TEHSILS AND UNION COUNCILS

There are four Tehsils and 41 Union Councils (UCs) in Kech district. Below given table and map show tehsil wise listing and geographical location of UCs.

Table 3: Tehsils and Union Councils

TEHSIL	UNION COUNCIL
Buleda	Allandoor, Baadai, Bit, Drabuli, Menaz, Naag, Seyahgessi, Gishkore
Dasht	Balnagore, Darachko, Kombail, Koncheti, Khuddan, Zarain Bug
Tump	Balicha, Bullo, Gayab, Gomazi, Nazarabad, Soro, Tagran, Tump
Turbat	Aabsar, Balore, Dandar, Ginna, Gokdan, Hoshab, Kalatuk, Malikabad, Nasirabad, Nodiz, Pidrak, Sami, Sarikahn, Shahrak, Singanisar, Turbat, Jath, Balor



Source: UNOCHA, 2017

Table 4: Federal and Provincial Government Departments in Kech

Health Department	Post Office
Education Department	Industries
Agriculture Department	Treasury Turbat
B & R Department	National Bank of Pakistan
Public Health Engineering Department	Election Commission
P&D Department	Food Department
Social Welfare Department	Small Industries
Local Government	Statics Department
District Administration	PIA Office
Municipal Committee/Corporation	Environment Department
TNT (PTCL)	National Highway Authority (NHA)
WAPDA	Weather Forecasting Department
District Zakat	Police Department
Court/Judiciary	Pakistan Broadcasting Corporation Turbat
NADRA	Excise & Taxation
FIA Office	Irrigation Department
Custom Office	Pakistan Television Turbat.

Baith-ul-Maal	Public Health Department Turbat
Pass Port Office	Technical Training Center Turbat.
Forest Department	Water & Management
Live Stock Department	District Council
Zarai Tariqiyati Bank of Pakistan Turbat Branch	Communication & Works Department (I & II)

Table 5: NGOs working in Kech

National Rural Support Programme (NRSP)
Family Planning Association Pakistan (FPAP)
Strengthening Participatory Organization (SPO)
Food and Agriculture Organization (FAO)
People for primary Health Initiative (PPHI)
SHADOW
National Commission for Human Development (NCHD)
Mekran Resource Center (MRC)
Association for Academic Quality (AFAQ)
Benazir Income Support Program (BISP)
Real Time Monitoring System Kech (RTMS) (It is a project and its setup is in DC office)
Gidroshia

4. AGRICULTURE AND IRRIGATION

The district falls in sub-tropical zone, with total cultivated area is 65,597 hectares, the potential major crops are wheat, barley, fodder, chilies, mung and mash bean, moth, onion, vegetables, tobacco, and cotton. The potential fruits in the districts are dates, mangoes, guava, pomegranate, grapes, melons, citrus, bananas, papaya, and Chickoo. Canals and tube wells are commonly used main sources of irrigation for agriculture and others. Privately owned tube wells are maintained by respective owners. Details of agriculture land, land ownership, and irrigation given in tables below:

Table-6 shows land utilization statistics. Table-7 shows area irrigated by different sources of irrigation. Table-8 shows number of household own land in rural areas. Table-9 shows number of government & private tube-wells in the district.

Table 8: Land utilization 2014-15 (area in hectares)

Reported area	Cultivated area			Cropped area		Un-cultivated area			
	Total	Current fallow	Net sown	Total	Area sown more than once	Total	Culturable waste	Forest area	Area not available for cultivation
554,336	65,597	21,513	44,084	44,084	0	488,739	51,583	104	437,052

Source: GoB, 2014-15

Table 9: Area Irrigated by different Sources of Irrigation 2014-15 (area in hectares)

Irrigated area	Canal		Tube-well	Well	Karezes, springs & others
	Govt.	Private			
44,084	0	41,784	885	1,415	0

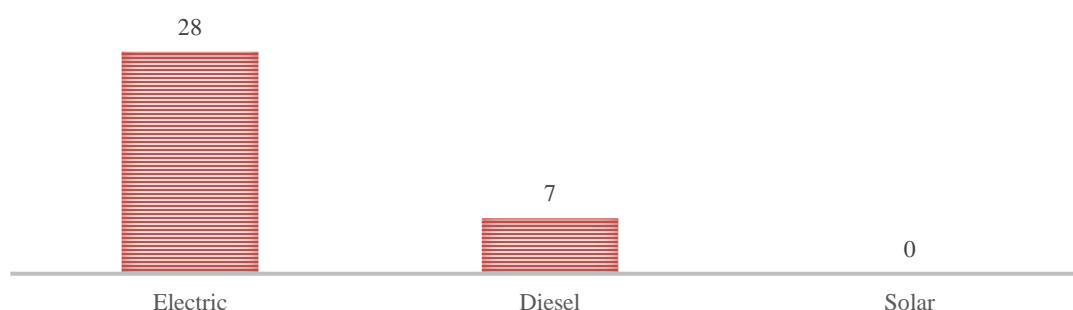
Source: GoB, 2014-15

Table 10: Member of Household Own Land in Rural Areas

OWNERSHIP	PERCENTAGE
Owner	20
Landless	80
Total	100

Source: MICS, 2010

Figure 2: Number of Tube-wells 2013-14



Source: GoB, 2014-15

Table 11: Number of Government & Private Tube-wells 2013-14

GOVERNMENT				PRIVATE				TOTAL			
Electric	Diesel	Solar	Total	Electric	Diesel	Solar	Total	Electric	Diesel	Solar	Total
0	0	0	0	28	7	0	35	28	7	0	35

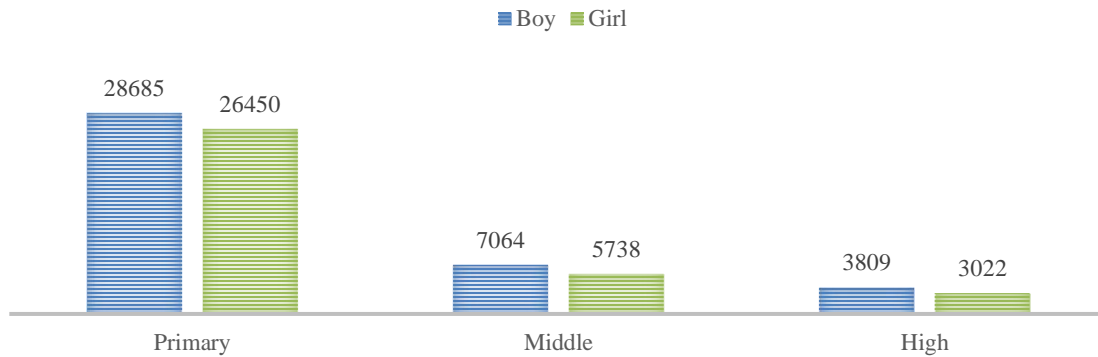
Source: GoB, 2014-15

5. GENDER AND WOMEN EMPOWERMENT

District Kech is different from other programme districts in terms of gender and women empowerment. Women in district Kech seldom follow veiling outside home and their inheritance in ownership rights are respected. However, similar to other districts, they depend mostly on males financially. They participate in economic activities including agriculture, farming, livestock, weaving etc. but not considered as part of labour force.

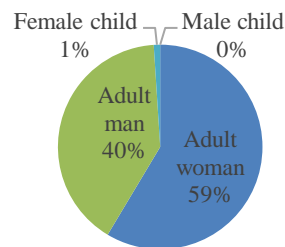
Figure-4 shows stage wise enrolment in district Khuzdar. Figure-5 shows gender wise persons collecting water.

Figure 3: Stage wise Enrolment 2015-16



Source: GoB, 2014-15

Figure 4: Person Collecting Water in Kech (%)



Source: MICS, 2010

6. HEALTH AND WASH

Figure-6 shows the percentage of children immunized aged 12-23 months in rural areas of Kech district. Table-10 shows status of health facilities. Figure-7 shows the number of BHUs, MCHs and TB clinics. Table-11 shows the number of health practitioners. Table-12 shows water and sanitation indicators. Figure-8 shows drinking water sources. Table-13 shows distribution of rural household by source of drinking water. Table-14 shows distribution of rural households by type of toilet.

Detailed statistics related to immunization, health facilities, practitioners, and water, sanitation & hygiene (WASH) are given in tables below:

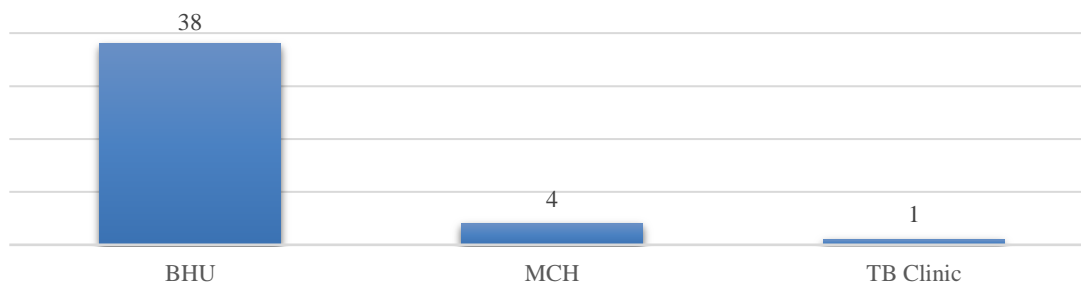
Table 12: Health Facilities 2014-15 (number)

	Public	Private
Hospital	2	7

Dispensaries	42	0
RHC	11	..

Source: GoB, 2014-15

Figure 5: Health Facilities 2014-15



Source: GoB, 2014-15

Table 13: Number of Health Practitioners 2014-15

Practitioners	Number
Doctors (total)	49
-Male	40
-Female	9
Nurses (total)	20
-Male	2
-Female	18
Pharmacist	17
Drug Inspector	3
Health Education Officer	1
LHV	42
Dias/Mid Wives	127
Malaria cases (2013-14)	4502

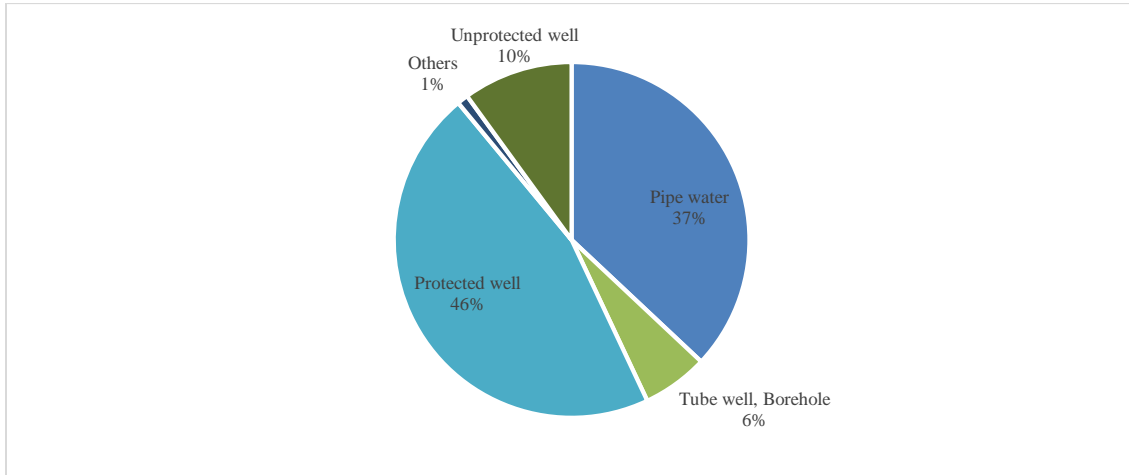
Source: GoB, 2014-15

Table 14: Water and Sanitation Indicators (%)

INDICATOR	2004	2010
Use of improved water sources	60	89
Access to safe means of excreta disposal	59	91

Source: MICS, 2004 & 2010

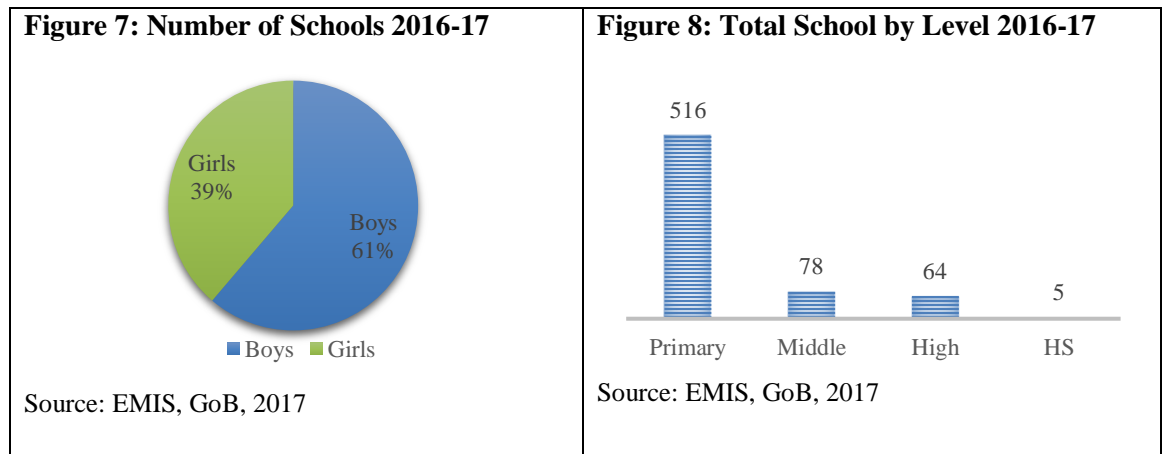
Figure 6: Drinking Water Sources



Source: MICS, 2010

7. EDUCATION

According to recent data from GoB and EMIS sources below given figure-9 shows gender wise number of schools in district Kech. Figure-10 shows the total number of schools by level. Figure-11 shows the number of functional and nonfunctional schools. Figure-12 shows the number of sanctioned and appointed staff in Schools. Figure-13 shows student teacher ratio. Figure-14 shows available facilities in schools. Figure-15 shows rural gross enrolment ratio at primary level (age 5-9). Figure-16 shows rural education indicators.



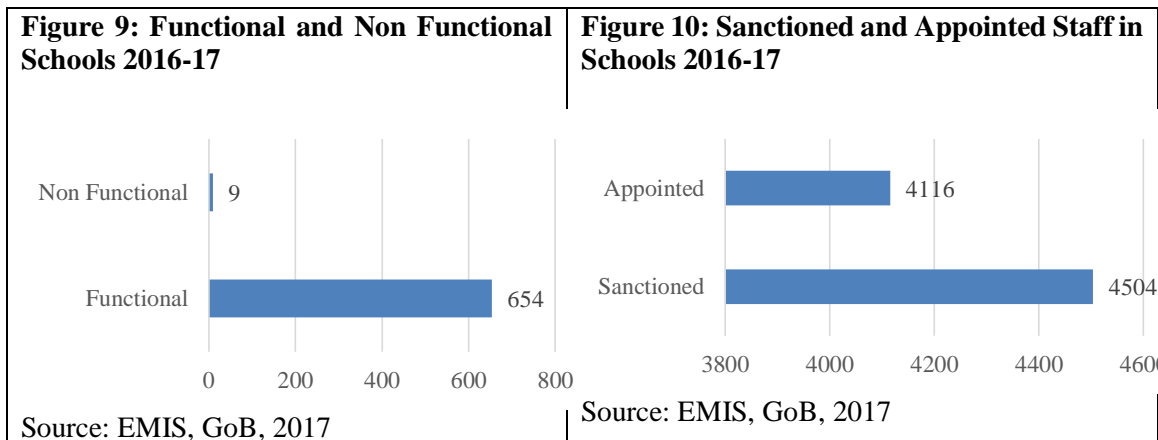
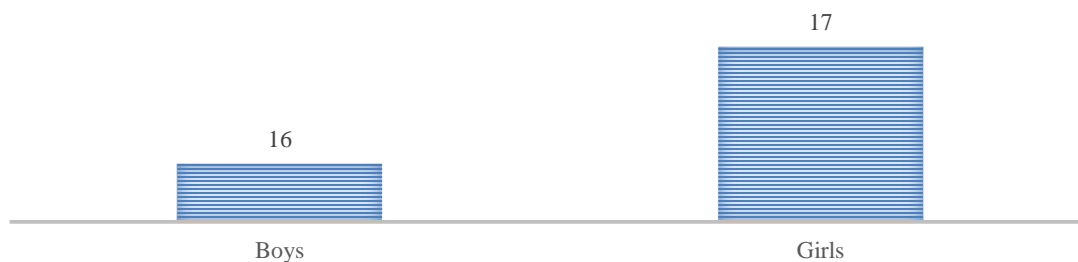
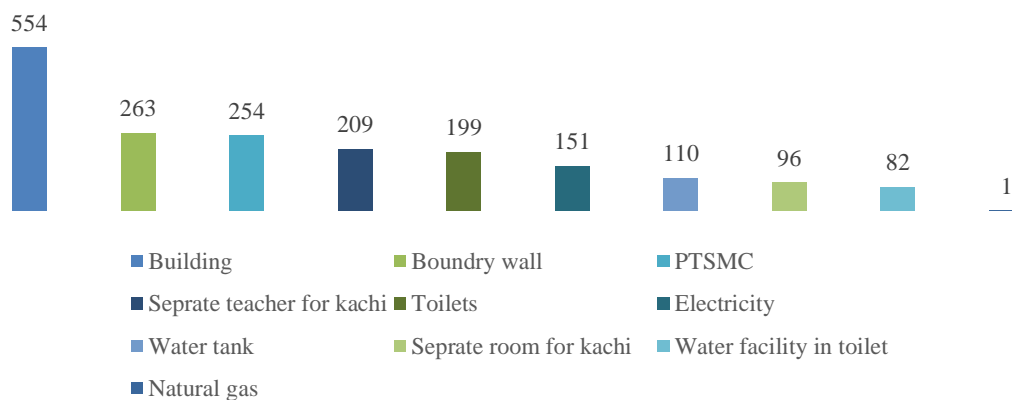


Figure 11: Student Teacher Ratio 2016-17



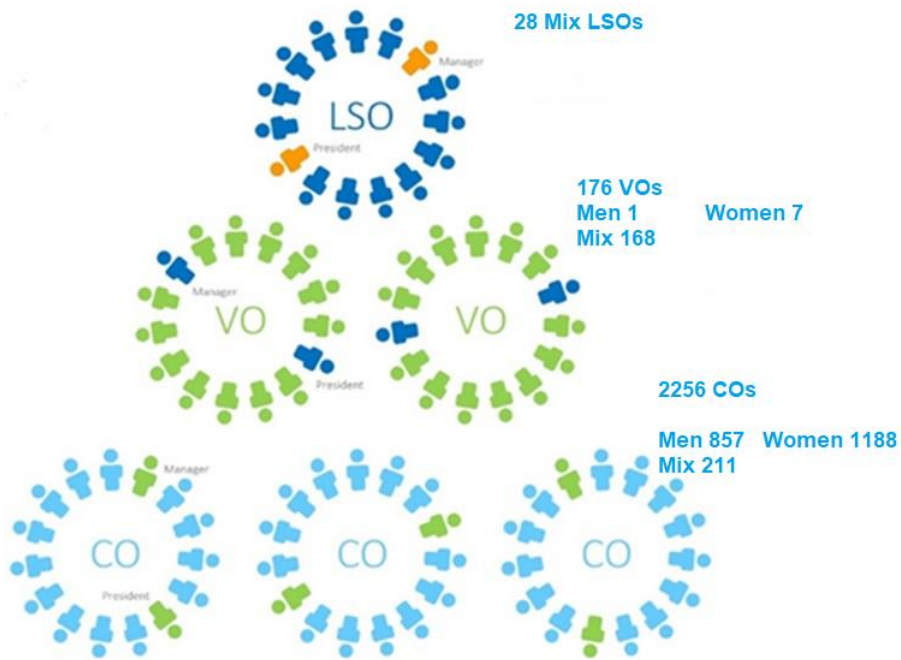
Source: EMIS, GoB, 2017

Figure 12: Available Facilities in Schools 2016-17



Source: EMIS, GoB, 2017

Under BRDCEP, around 66,795 rural households in Kech district will be mobilized and capacitated through three-tiered federated community organizations. Community members in the 38 rural union councils of the entire district Kech, particularly women and marginalized, will be capacitated and assisted so that they can mobilize and form active operational and mature organizations, from COs to VOs, then LSOs and LSOs' networks. Following given figure shows number of COs, VOs and LSOs formed in the district till Jun 2017



BIBLIOGRAPHY

1. EMIS. (2017). *Education Management Information System*, Education Department, Government of Balochistan.
2. MICS. (2010). *Multiple Indicator Cluster Survey (MICS)*. Planning and Development Department, Government of Balochistan.
3. PBS. (2017). *Census - 2017*, Pakistan Bureau of Statistics, Government of Pakistan, Islamabad.
4. PSLM. (2014-15). *Pakistan Social and Living Standards Measurement Survey (PSLM) 2014-15*. Statistics Division, Government of Pakistan, Statistics Division, Pakistan Bureau of Statistics, Islamabad.
5. P&D. (2011). *District Development Profile*, Planning and Development Department (P&D), Government of Balochistan and United Nations Children's Fund (UNICEF).
6. P&D. (2014-15). *Development Statistics of Balochistan*, Bureau of Statistics, Planning and Development Department (P&D), Government of Balochistan, Quetta.
7. UNOCHA. (2017). *MapAction*, United Nations Office for the Coordination of Humanitarian Affairs (UNOCHA), MapAction Version 2, downloaded from QGIS.